

# CITY STANDARDS 2018-2019

Behaviour policy appendix 4.

# CITY ACADEMY BRISTOL

- Why does City Academy exist?
  - So that every student has the opportunity to go to university, choose their career and improve the world.
- How do we behave?
  - We value pride, grit and team spirit so that we can win in life.
- What do we do?
  - We educate 11-18 year olds in the local community
- How will we succeed?
  - By maximising learning, systematically improving literacy and creating a supporting, professional environment

# CITY STANDARDS THE PROCESS

Red Card

Warning and name on the board if behavior is extreme  
E.G. fighting

Student misbehaves

Warning and name on the board

Student behavior is repeated

Students placed in link

- Teacher records a I
- Text home
- Comment in communication log on SIMS
- Restore to take place

Yellow Card

Student doesn't misbehave again

- 2 recorded on SIMS
- No further action unless behavior is repeated

# WHY GIVE A YELLOW CARD? WARNING AND 2 RECORDED ON SIMS

- Talking when you shouldn't



- Not enough work



- Stopping others from working

- Refusing to follow instructions from an adult



- Lateness (3 minutes)



- Eating in class



- Littering



- Running inside



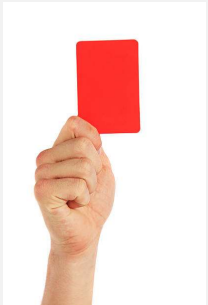
- Swearing



- Play fighting



## WHY GIVE A RED CARD? TO THE LINK AND I RECORDED ON SIMS



- Fighting
- Missing lessons
- Vandalism
- 2 x yellow cards
- Verbal threats to others

## RED CARD – LINK – PROBABLY EXCLUSION

- Unprovoked attack on another
- Use of an object in a fight
- Missing school without permission
- Verbal abuse of others (swearing at others, racist, homophobic and gender based insults)
- Possession of banned or illegal substances and images

# RESTORE

- Restore takes place in E09
- Years 7-10
  - Restore at 3.15 Monday –Thursday
  - 2.35 on a Friday
- Year 11
  - Onus is on the students to find the teacher before the next lesson and restore
- If restore has not taken place then students will be in the link for the whole of the next day. Teachers to phone home if a student misses restore.

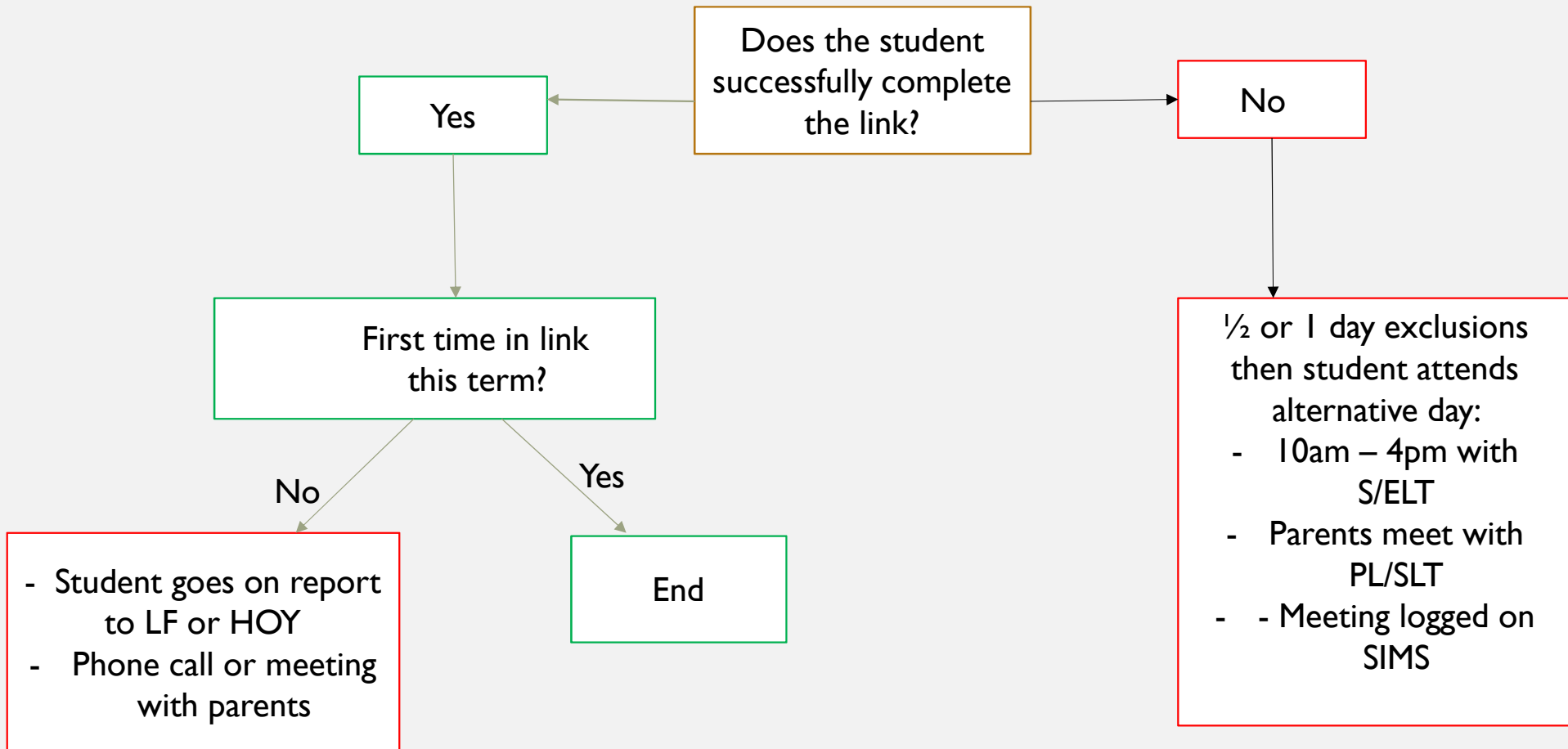
# RESTORATIVE CONVERSATION

The model is a four step - DESC

- Describe your feelings (K): I feel disappointed, let down, concerned
- Explain why (the behavioural description V & K): "...when you do/say
- Specify the future desired behaviour change (a way of meeting your need) "In future, I would prefer it if you would..."
- Consequences, **if the unwanted behaviour persists** "Otherwise, I will.."



# THE LINK

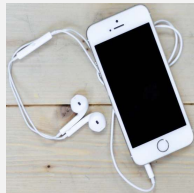


## ITEMS THAT WILL BE CONFISCATED AND RETURNED AT THE END OF THE DAY

- Non uniform  
after entering the building



- Mobile phones and earphones



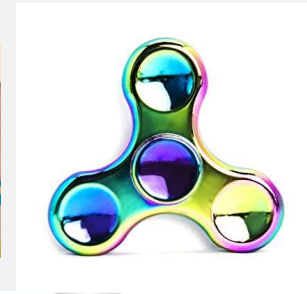
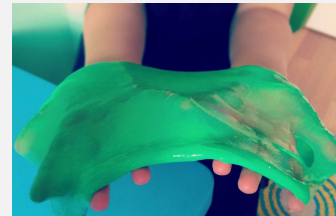
- Large cartons / bottles of juice (1 litre or more)



- Big bags / multipacks of crisps, sweets, and chocolate



- Crazes / fads



- Energy drinks



# MISSING EQUIPMENT AND UNIFORM

- Checked in afternoon LF
- Note in planner
- Follow up text
- Repeat : phone call home from LF, then HoY.



## CLARIFICATION QUESTIONS

- What happens if a student gets out a phone in lessons? The phone needs to be confiscated. No yellow card to be given. The teacher then needs to tell the student where the phone can be collected at the end of day (faculty office or Ben Pearce's office). If the phone is taken to the Ben Pearce's office it must be signed in, labelled and placed in the box. Please do not just leave phones in the PSW or Ben's office.
- What happens if I confiscate other items E.G. food/jumpers? The confiscated item is to be taken to the faculty office and let students know where your faculty office is.
- What happens if a student turns up to lessons in trainers? All uniform should be checked in the morning as students walk into the school building and again in morning meetings. If a student has trainers on after break, please ask them to put their school shoes on (no yellow warning). If a student constantly comes to lessons with trainers and wastes time getting shoes then we can review this on an individual basis.
- Missing equipment: It is part of the LF role to check students are equipped for school. No yellow warnings for no pens/planners. If a student is consistently not equipped for learning then teachers can contact the LF to ring home.